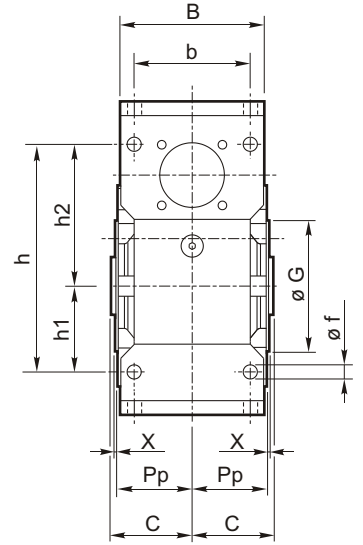
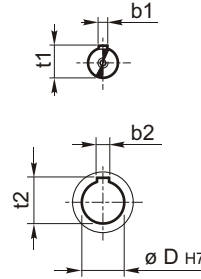
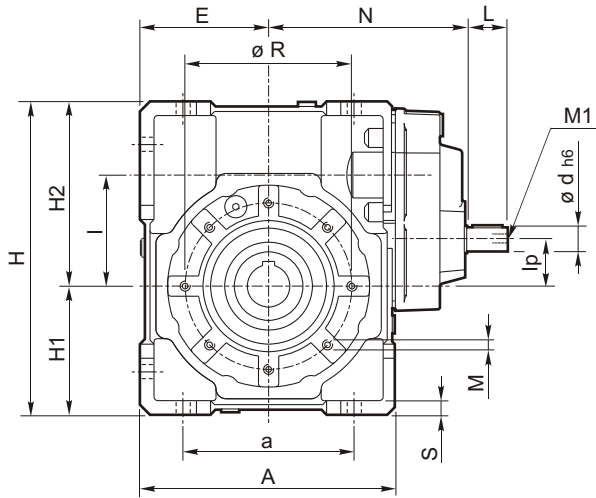
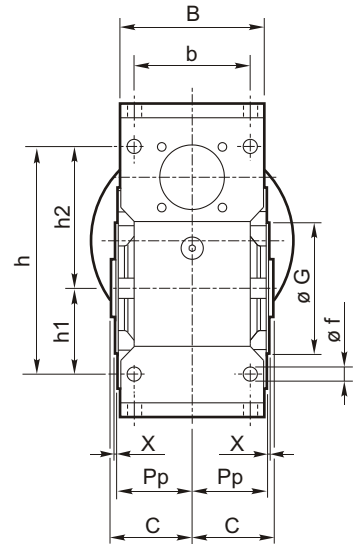
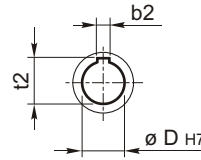
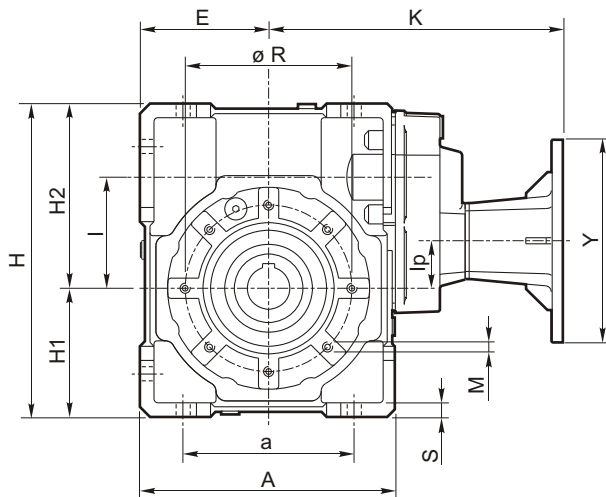


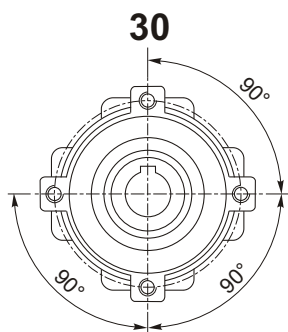
HA



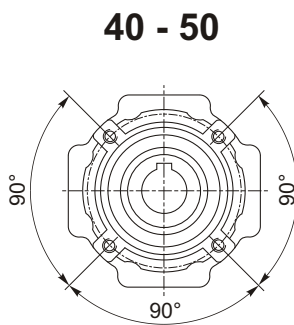
HF



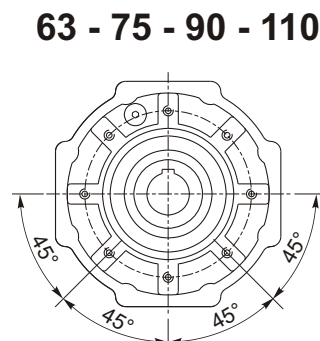
Flangia pendolare / Side cover for shaft mounting / Flansch für Drehmomentstutze



4 Fori / Holes / Bohrungen



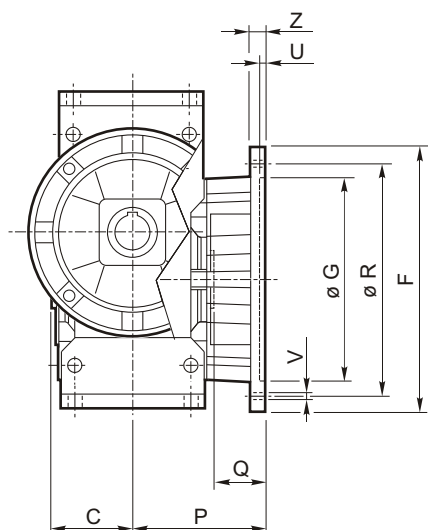
4 Fori / Holes / Bohrungen



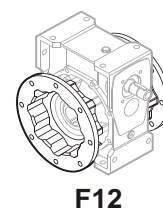
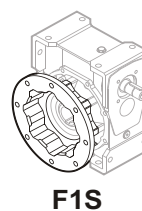
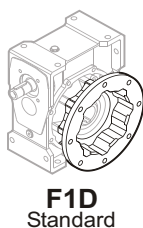
8 Fori / Holes / Bohrungen

	A	a	B	b	b1	b2	C	D	d	E	f	G h8	H	H1	H2	h	h1	h2	I	IP	L	M	M1	N	Pp	R	s	t1	t2	X
<b>40</b>	105	70	71	60	3	6	39	18	9	50	6.5	60	125	50	75	90	35	55	40	5	15	M6X10	M4x12	91.5	36.5	75	6	10.2	20.8	1.5
<b>50</b>	125	80	85	70	4	8	46	25	11	60	8.5	70	150	60	90	104	40	64	50	10	20	M8x10	M4x12	104.5	43.5	85	7	12.5	28.3	1.5
<b>63</b>	147	100	103	85	5	8	56	25	14	72	9	80	182	72	110	130	50	80	63	16.5	25	M8x14	M4x10	121	53	95	8	16	28.3	2
<b>75</b>	176	120	112	90	6	8	60	28	19	86	11	95	219.5	86	133.5	153	60	93	75	22	30	M8x14	M6x16	147.75	57	115	10	21.5	31.3	2
<b>90</b>	203	140	130	100	6	10	70	35	19	103	13	110	248.5	103	145.5	172	70	102	90	37	30	M10x18	M6x16	157.75	67	130	12	21.5	38.3	2
<b>110</b>	252.5	170	143	115	8	12	77.5	42	24	127.5	14	130	310.5	127.5	183	210	85	125	110	47	40	M10x18	M8x22	196.5	74	165	14	27	45.3	2.5

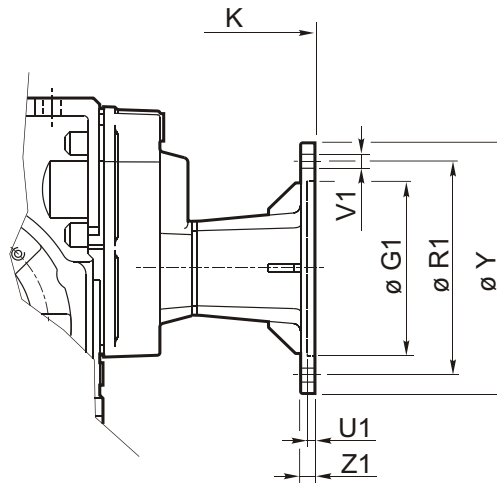
Flangia uscita / Output flange / Abtriebsflansch


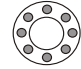


Tipo Type Typ		C	F	G (H8)	P	Q	R	U	V	Z	
<b>30</b>	F1	31.5		66	50	54.5	23	68	4	6.5	6
	F2										
	F3										
<b>40</b>	F1	39		85	60	67	28	75-90	4	9	8
	F2										
	F3										
<b>50</b>	F1	46		94	70	90	44	85-95	5	11	10
	F2										
	F3										
<b>63</b>	F1	56		142	115	82	26	150	5	11	11
	F2										
	F3										
<b>75</b>	F1	60		160	130	111	51	165	5	13	12
	F2										
	F3										
<b>90</b>	F1	70		200	152	111	41	175	5	13	12
	F2										
	F3										
<b>110</b>	F1	77.5		260	170	131	53.5	230	6	13	15
	F2										
	F3										



Flangia entrata / Input flange / Antriebsflansch



HF	PAM	G <sub>1</sub>	K	R <sub>1</sub>	U <sub>1</sub>	n° Fori / Holes / Bohrungen			Y	Z <sub>1</sub>
						V <sub>1</sub>				
40	56 B5	80	129.5	100	3.5	7	8		120	8
	56 B14	50	129.5	65	3.5	6		4	80	8
	63 B5	95	132.5	115	4	9	8		140	10
	63 B14	60	132.5	75	3.5	6	8		90	8
50	56 B5	80	148.5	100	3.5	7	8		120	8
	63 B5	95	151.5	115	4	9	8		140	10
	63 B14	60	151.5	75	3.5	6	8		90	8
	71 B5	110	158.5	130	4.5	9	8		160	10
	71 B14	70	158.5	85	4	7	8		105	10
63	63 B5	95	173	115	4	9	8		140	10
	71 B5	110	180	130	4.5	9	8		160	10
	71 B14	70	180	85	3.5	7		4	105	10
	80 B5	130	190	165	4.5	11	8		200	10
	80 B14	80	190	100	4	7	8		120	10
75	71 B5	110	211.75	130	4.5	9	8		160	10
	80/90 B5	130	231.75	165	4.5	11	8		200	10
	80 B14	80	221.75	100	4	7	8		120	10
	90 B14	95	231.75	115	4	9	8		140	10
90	71 B5	110	221.75	130	4.5	9	8		160	10
	80/90 B5	130	241.75	165	4.5	11	8		200	10
	80 B14	80	231.75	100	4	7	8		120	10
	90 B14	95	241.75	115	4	9	8		140	10
110	80/90 B5	130	294.5	165	4.5	11	8		200	10
	90 B14	95	294.5	115	4	9		4	140	10
	100/112 B5	180	304.5	215	5	14	8		250	14
	100/112 B14	110	304.5	130	4.5	9	8		160	10